

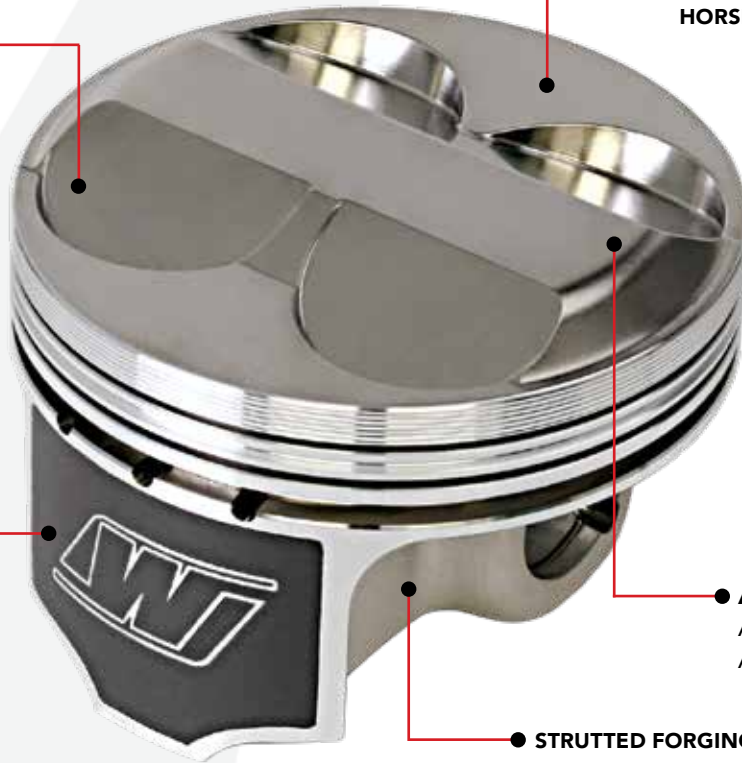


# SPORT COMPACT SERIES

## MODERN DAY 4 & 6 CYLINDER HIGH PERFORMANCE PISTONS

● 2618 AEROSPACE ALLOY FOR SUPERIOR STRENGTH TO WEIGHT RATIO

● HD SEVERE DUTY FORGING AVAILABLE FOR HEAVY HORSEPOWER APPLICATIONS



● **ArmorGlide® SKIRT COATING**  
INCREASES POWER AND REDUCES PISTON ROCK.

● **ArmorPlating™**  
AVAILABLE ON SELECT APPLICATIONS

● **STRUTTED FORGING FOR IMPROVED STRENGTH**





## HONDA / ACURA

## ACURA / HONDA

## Honda B16A • Civic SI 1993-2001 (must use at least a .040" thick gasket)

Kit Part #	Bore mm / Inch	Oversize	Stroke	Rod	Comp. Ht.	Head cc's	Volume	Gasket Thickness	Deck Clearance	Block Ht.	Comp. Ratio	Pin Part # (Included)	Ringset (Included)	Avg. Wt.	Foot note
<b>Includes .225" wall tool steel pin</b>															
K673M81AP	81.00 / 3.189	Std.	3.047 77.4mm	5.287 134.3mm	1.181 30mm	42.7	-8cc	0.040 1.0mm	.0005 .013mm	7.992 203mm	8.1	S733 21mm - .827 x 2.002	8100XX	289	1, 2, 3
K673M815AP	81.50 / 3.209	0.020									8.2		8150XX	295	
K673M82AP	82.00 / 3.228	0.040									8.3		8200XX	303	
<b>Includes .200" wall tool steel pin</b>															
K649M84	84.00 / 3.307	0.080	3.047 77.4mm	5.287 134.3mm	1.181 30mm	42.7	-10cc	0.040 1.0mm	.0005 .013mm	7.992 203mm	8.3	S750 21mm - .827 x 2.362	8400XX	320	1, 3
K649M845	84.50 / 3.327	0.100									8.4		8450XX	326	
K649M85	85.00 / 3.346	0.120									8.5		8500XX	332	
K542M81AP	81.00 / 3.189	Std.	3.047 77.4mm	5.287 134.3mm	1.175 29.85mm	42.7	-2.4cc FT	0.040 1.0mm	.0065 .17mm	7.992 203mm	8.8	S656 21mm - .827 x 2.002	8100XX	280	1, 3
K542M8125AP	81.25 / 3.199	0.010									8.8		8125XX	281	
K542M815AP	81.50 / 3.209	0.020									8.9		8150XX	285	
K542M82AP	82.00 / 3.228	0.040	9.0	8200XX	296										
K623M84	84.00 / 3.307	0.080	3.047 77.4mm	5.287 134.3mm	1.181 30mm	42.7	-2.3cc FT	0.040 1.0mm	.0005 .013mm	7.992 203mm	9.4	S656 21mm - .827 x 2.002	8400XX	296	1, 3
K623M845	84.50 / 3.327	0.100									9.4		8450XX	302	
K567M84AP	84.00 / 3.307	0.080									10.1		8400XX	288	
K567M8425AP	84.25 / 3.317	0.090	3.047 77.4mm	5.287 134.3mm	1.181 30mm	42.7	2cc	0.040 1.0mm	.0005 .013mm	7.992 203mm	10.2	S656 21mm - .827 x 2.002	8425XX	292	1, 3
K567M845AP	84.50 / 3.327	0.100									10.2		8450XX	294	
K567M85AP	85.00 / 3.346	0.120									10.3		8500XX	300	
K566M81AP	81.00 / 3.189	Std.	3.047 77.4mm	5.287 134.3mm	1.185 30.1mm	42.7	5cc	0.040 1.0mm	+.0035 +.009mm	7.992 203mm	10.4	S656 21mm - .827 x 2.002	8100XX	275	1, 2, 3
K566M8125AP	81.25 / 3.199	0.010									10.4		8125XX	279	
K566M815AP	81.50 / 3.209	0.020									10.5		8150XX	281	
K566M82AP	82.00 / 3.228	0.040	10.6	8200XX	287										
K593M81AP	81.00 / 3.189	Std.	3.047 77.4mm	5.287 134.3mm	1.181 30mm	42.7	8.3cc	0.040 1.0mm	.0005 .013mm	7.992 203mm	10.9	S656 21mm - .827 x 2.002	8100XX	270	1, 2, 3
K593M8125AP	81.25 / 3.199	0.010									11.0		8125XX	270	
K593M815AP	81.50 / 3.209	0.020									11.0		8150XX	278	
K593M82AP	82.00 / 3.228	0.040	11.1	8200XX	281										
K594M84AP	84.00 / 3.307	0.080	3.047 77.4mm	5.287 134.3mm	1.181 30mm	42.7	8.3cc	0.040 1.0mm	.0005 .013mm	7.992 203mm	11.5	S561 21mm - .827 x 2.002	8400XX	275	1, 3
K594M8425AP	84.25 / 3.317	0.090									11.6		8425XX	276	
K594M845AP	84.50 / 3.327	0.100									11.6		8450XX	279	
K594M85AP	85.00 / 3.346	0.120									11.7		8500XX	286	
K594M855AP	85.50 / 3.366	0.140									11.9		8550XX	292	
K594M86AP	86.00 / 3.386	0.160									12.0		8600XX	297	

\*\*\*84.00mm and larger require sleeved engine block

Optional K1 Rod for B16A Series: Part # 015BR16529

## Honda B17A1 • Integra GSR 1992-1993 (must use at least .040" thick gasket)

Kit Part #	Bore mm / Inch	Oversize	Stroke	Rod	Comp. Ht.	Head cc's	Volume	Gasket Thickness	Deck Clearance	Block Ht.	Comp. Ratio	Pin Part # (Included)	Ringset (Included)	Avg. Wt.	Foot note
<b>Includes .225" wall tool steel pin</b>															
K673M81AP	81.00 / 3.189	Std.	3.205 81.4mm	5.287 134.3mm	1.181 30mm	42.7	-8cc	0.040 1.0mm	.0005 .013mm	7.992 203mm	8.4	S733 21mm - .827 x 2.002	8100XX	289	1, 2, 3
K673M815AP	81.50 / 3.209	0.020									8.5		8150XX	295	
K673M82AP	82.00 / 3.228	0.040									8.6		8200XX	303	
K542M81AP	81.00 / 3.189	Std.	3.205 81.4mm	5.208 132.3mm	1.175 29.85mm	42.7	-2.4cc FT	0.040 1.0mm	.0065 .17mm	7.992 203mm	9.2	S656 21mm - .827 x 2.002	8100XX	280	1, 3
K542M8125AP	81.25 / 3.199	0.010									9.2		8125XX	281	
K542M815AP	81.50 / 3.209	0.020									9.3		8150XX	285	
K542M82AP	82.00 / 3.228	0.040	9.4	8200XX	296										
K566M81AP	81.00 / 3.189	Std.	3.205 81.4mm	5.208 132.3mm	1.185 30.1mm	42.7	5cc	0.040 1.0mm	+.0035 +.009mm	7.992 203mm	10.7	S656 21mm - .827 x 2.002	8100XX	275	1, 2, 3
K566M8125AP	81.25 / 3.199	0.010									10.7		8125XX	279	
K566M815AP	81.50 / 3.209	0.020									10.8		8150XX	281	
K566M82AP	82.00 / 3.228	0.040	10.9	8200XX	287										
K593M81AP	81.00 / 3.189	Std.	3.205 81.4mm	5.208 132.3mm	1.181 30mm	42.7	8.3cc	0.040 1.0mm	.0005 .013mm	7.992 203mm	11.6	S656 21mm - .827 x 2.002	8100XX	270	1, 2, 3
K593M8125AP	81.25 / 3.199	0.010									11.6		8125XX	270	
K593M815AP	81.50 / 3.209	0.020									11.7		8150XX	278	
K593M82AP	82.00 / 3.228	0.040	11.8	8200XX	281										

Foot Notes (far right column)

1 - Most Wiseco Pistons have offset pins. (Pins must be offset, same as OEM, for quietest operation).

2 - Due to compression height that may protrude above the deck, it is recommended that a 1.00mm thick head gasket is used.

3 - Optional pin upgrade available. [See page 98 for info](#)

## HONDA / ACURA

## ACURA / HONDA B-Series

## Honda B18A1/B1 • Integra 1990-2001

Kit Part #	Bore mm / Inch	Oversize	Stroke	Rod	Comp. Ht.	Head cc's	Volume	Gasket Thickness	Deck Clearance	Block Ht.	Comp. Ratio	Pin Part # (Included)	Ringset (Included)	Avg. Wt.	Foot note
K541M81AP	81.00 / 3.189	Std.	3.504 89mm	5.394 137mm	1.181 30mm	45.0	-12cc	0.030 .76mm	.020 .50mm	8.347 212mm	8.2	S656 21mm - .827 x 2.002	8100XX	280	1, 3
K541M8125AP	81.25 / 3.199	0.010									8.3		8125XX	281	
K541M815AP	81.50 / 3.209	0.020									8.3		8150XX	285	
K541M82AP	82.00 / 3.228	0.040									8.4		8200XX	296	
<b>Includes .225" wall tool steel pin</b>															
K673M81AP	81.00 / 3.189	Std.	3.504 89mm	5.394 137mm	1.181 30mm	45.0	-8cc	0.030 .76mm	.020 .50mm	8.347 212mm	8.5	S733 21mm - .827 x 2.002	8100XX	289	1, 2, 3
K673M815AP	81.50 / 3.209	0.020									8.6		8150XX	295	
K673M82AP	82.00 / 3.228	0.040									8.7		8200XX	303	
<b>Includes .200" wall tool steel pin</b>															
K649M84	84.00 / 3.307	0.080	3.504 89mm	5.394 137mm	1.181 30mm	45.0	-10cc	0.030 .76mm	.020 .50mm	8.347 212mm	8.8	S750 21mm - .827 x 2.362	8400XX	320	1, 3
K649M845	84.50 / 3.327	0.100									8.9		8450XX	326	
K649M85	85.00 / 3.346	0.120									8.9		8500XX	332	
K542M81AP	81.00 / 3.189	Std.	3.504 89mm	5.394 137mm	1.175 29.85mm	45.0	-2.4cc FT	0.030 .76mm	.026 .66mm	8.347 212mm	9.4	S656 21mm - .827 x 2.002	8100XX	280	1, 3
K542M8125AP	81.25 / 3.199	0.010									9.4		8125XX	281	
K542M815AP	81.50 / 3.209	0.020									9.5		8150XX	285	
K542M82AP	82.00 / 3.228	0.040									9.6		8200XX	296	
K623M84	84.00 / 3.307	0.080	3.504 89mm	5.394 137mm	1.181 30mm	45.0	-2.3cc FT	0.030 .76mm	.020 .50mm	8.347 212mm	9.9	S656 21mm - .827 x 2.002	8400XX	296	1, 3
K623M845	84.50 / 3.327	0.100									10.0		8450XX	302	
K566M81AP	81.00 / 3.189	Std.	3.504 89mm	5.394 137mm	1.185 30.1mm	45.0	5cc	0.030 .76mm	.016 .40mm	8.347 212mm	11.0	S656 21mm - .827 x 2.002	8100XX	275	1, 2, 3
K566M8125AP	81.25 / 3.199	0.010									11.0		8125XX	279	
K566M815AP	81.50 / 3.209	0.020									11.1		8150XX	281	
K566M82AP	82.00 / 3.228	0.040									11.1		8200XX	287	
K593M81AP	81.00 / 3.189	Std.	3.504 89mm	5.394 137mm	1.181 30mm	45.0	8.3cc	0.030 .76mm	.020 .50mm	8.347 212mm	11.6	S656 21mm - .827 x 2.002	8100XX	270	1, 2, 3
K593M8125AP	81.25 / 3.199	0.010									11.7		8125XX	270	
K593M815AP	81.50 / 3.209	0.020									11.7		8150XX	278	
K593M82AP	82.00 / 3.228	0.040									11.8		8200XX	281	
K594M84AP	84.00 / 3.307	0.080	3.504 89mm	5.394 137mm	1.181 30mm	45.0	8.3cc	0.030 .76mm	.020 .50mm	8.347 212mm	12.3	S561 21mm - .827 x 2.002	8400XX	275	1, 3
K594M8425AP	84.25 / 3.317	0.090									12.3		8425XX	276	
K594M845AP	84.50 / 3.327	0.100									12.4		8450XX	279	
K594M85AP	85.00 / 3.346	0.120									12.5		8500XX	286	
K594M855AP	85.50 / 3.366	0.140									11.6		8550XX	292	
K594M86AP	86.00 / 3.386	0.160									12.7		8600XX	297	

\*\*\*84.00mm and larger require sleeved engine block

Optional K1 Rod for B18A1/B1, B20B Series: Part # 015BR16137

## Foot Notes (far right column)

- 1 - Most Wiseco Pistons have offset pins. (Pins must be offset, same as OEM, for quietest operation).
- 2 - Due to compression height that may protrude above the deck, it is recommended that a 1.00mm thick head gasket is used.
- 3 - Optional pin upgrade available.
- 4 - Utilizes extra deep valve pockets to expand the range of I-Vtec with big cams and milled heads
- 6 - These pistons have an oil ring groove that is lower than OE. Will not work with sleeves with access hole if the oil ring is not pinned in place.

B - Build to order.

C - Stroker Kit for B25 stroker Crank.

D - Weight reduction possible.

E - With valve pockets online K557M Series.

G - Only with 2.5L connecting rods

H - Based on Volvo rod 23mm. Ford OEM 21mm.

P - Piston guided rod, washer required.

Q - Oil Squirter modification required.

R - Pin 20mm, OEM = 20.65mm (13/16)



## HONDA / ACURA

## ACURA / HONDA B-Series

Honda B17A1 • Integra GSR 1992-1993 (must use at least .040" thick gasket)																
Kit Part #	Bore mm / Inch	Oversize	Stroke	Rod	Comp. Ht.	Head cc's	Volume	Gasket Thickness	Deck Clearance	Block Ht.	Comp. Ratio	Pin Part # (Included)	Ringset (Included)	Avg. Wt.	Foot- note	
<i>Includes .225" wall tool steel pin</i>																
K673M81AP	81.00 / 3.189	Std.	3.205 81.4mm	5.287 134.3mm	1.181 30mm	42.7	-8cc	0.040 1.0mm	.0005 .013mm	7.992 203mm	8.4	S733 21mm - .827 x 2.002	8100XX	289	1, 2, 3	
K673M815AP	81.50 / 3.209	0.020									8.5		8150XX	295		
K673M82AP	82.00 / 3.228	0.040									8.6		8200XX	303		
Kit Part #	Bore mm / Inch	Oversize	Stroke	Rod	Comp. Ht.	Head cc's	Volume	Gasket Thickness	Deck Clearance	Block Ht.	Comp. Ratio	Pin Part # (Included)	Ringset (Included)	Avg. Wt.	Foot- note	
K542M81AP	81.00 / 3.189	Std.	3.205 81.4mm	5.208 132.3mm	1.175 29.85mm	42.7	-2.4cc FT	0.040 1.0mm	.0065 .17mm	7.992 203mm	9.2	S656 21mm - .827 x 2.002	8100XX	280	1, 3	
K542M8125AP	81.25 / 3.199	0.010									9.2		8125XX	281		
K542M815AP	81.50 / 3.209	0.020									9.3		8150XX	285		
K542M82AP	82.00 / 3.228	0.040									9.4		8200XX	296		
K566M81AP	81.00 / 3.189	Std.	3.205 81.4mm	5.208 132.3mm	1.185 30.1mm	42.7	5cc	0.040 1.0mm	+.0035 +.009mm	7.992 203mm	10.7	S656 21mm - .827 x 2.002	8100XX	275	1, 2, 3	
K566M8125AP	81.25 / 3.199	0.010									10.7		8125XX	279		
K566M815AP	81.50 / 3.209	0.020									10.8		8150XX	281		
K566M82AP	82.00 / 3.228	0.040									10.9		8200XX	287		
K593M81AP	81.00 / 3.189	Std.	3.205 81.4mm	5.208 132.3mm	1.181 30mm	42.7	8.3cc	0.040 1.0mm	.0005 .013mm	7.992 203mm	11.6	S656 21mm - .827 x 2.002	8100XX	270	1, 2, 3	
K593M8125AP	81.25 / 3.199	0.010									11.6		8125XX	270		
K593M815AP	81.50 / 3.209	0.020									11.7		8150XX	278		
K593M82AP	82.00 / 3.228	0.040									11.8		8200XX	281		
Honda B18A1/B1 • Integra 1990-2001																
Kit Part #	Bore mm / Inch	Oversize	Stroke	Rod	Comp. Ht.	Head cc's	Volume	Gasket Thickness	Deck Clearance	Block Ht.	Comp. Ratio	Pin Part # (Included)	Ringset (Included)	Avg. Wt.	Foot- note	
K541M81AP	81.00 / 3.189	Std.	3.504 89mm	5.394 137mm	1.181 30mm	45.0	-12cc	0.030 .76mm	.020 .50mm	8.347 212mm	8.2	S656 21mm - .827 x 2.002	8100XX	280	1, 3	
K541M8125AP	81.25 / 3.199	0.010									8.3		8125XX	281		
K541M815AP	81.50 / 3.209	0.020									8.3		8150XX	285		
K541M82AP	82.00 / 3.228	0.040									8.4		8200XX	296		
<i>Includes .225" wall tool steel pin</i>																
K673M81AP	81.00 / 3.189	Std.	3.504 89mm	5.394 137mm	1.181 30mm	45.0	-8cc	0.030 .76mm	.020 .50mm	8.347 212mm	8.5	S733 21mm - .827 x 2.002	8100XX	289	1, 2, 3	
K673M815AP	81.50 / 3.209	0.020									8.6		8150XX	295		
K673M82AP	82.00 / 3.228	0.040									8.7		8200XX	303		
<i>Includes .200" wall tool steel pin</i>																
K649M84	84.00 / 3.307	0.080	3.504 89mm	5.394 137mm	1.181 30mm	45.0	-10cc	0.030 .76mm	.020 .50mm	8.347 212mm	8.8	S750 21mm - .827 x 2.362	8400XX	320	1, 3	
K649M845	84.50 / 3.327	0.100									8.9		8450XX	326		
K649M85	85.00 / 3.346	0.120									8.9		8500XX	332		
K542M81AP	81.00 / 3.189	Std.	3.504 89mm	5.394 137mm	1.175 29.85mm	45.0	-2.4cc FT	0.030 .76mm	.026 .66mm	8.347 212mm	9.4	S656 21mm - .827 x 2.002	8100XX	280	1, 3	
K542M8125AP	81.25 / 3.199	0.010									9.4		8125XX	281		
K542M815AP	81.50 / 3.209	0.020									9.5		8150XX	285		
K542M82AP	82.00 / 3.228	0.040									9.6		8200XX	296		
K623M84	84.00 / 3.307	0.080	3.504 89mm	5.394 137mm	1.181 30mm	45.0	-2.3cc FT	0.030 .76mm	.020 .50mm	8.347 212mm	9.9	S656 21mm - .827 x 2.002	8400XX	296	1, 3	
K623M845	84.50 / 3.327	0.100									10.0		8450XX	302		
K566M81AP	81.00 / 3.189	Std.	3.504 89mm	5.394 137mm	1.185 30.1mm	45.0	5cc	0.030 .76mm	.016 .40mm	8.347 212mm	11.0	S656 21mm - .827 x 2.002	8100XX	275	1, 2, 3	
K566M8125AP	81.25 / 3.199	0.010									11.0		8125XX	279		
K566M815AP	81.50 / 3.209	0.020									11.1		8150XX	281		
K566M82AP	82.00 / 3.228	0.040									11.1		8200XX	287		
K593M81AP	81.00 / 3.189	Std.	3.504 89mm	5.394 137mm	1.181 30mm	45.0	8.3cc	0.030 .76mm	.020 .50mm	8.347 212mm	11.6	S656 21mm - .827 x 2.002	8100XX	270	1, 2, 3	
K593M8125AP	81.25 / 3.199	0.010									11.7		8125XX	270		
K593M815AP	81.50 / 3.209	0.020									11.7		8150XX	278		
K593M82AP	82.00 / 3.228	0.040									11.8		8200XX	281		
K594M84AP	84.00 / 3.307	0.080	3.504 89mm	5.394 137mm	1.181 30mm	45.0	8.3cc	0.030 .76mm	.020 .50mm	8.347 212mm	12.3	S561 21mm - .827 x 2.002	8400XX	275	1, 3	
K594M8425AP	84.25 / 3.317	0.090									12.3		8425XX	276		
K594M845AP	84.50 / 3.327	0.100									12.4		8450XX	279		
K594M85AP	85.00 / 3.346	0.120									12.5		8500XX	286		
K594M855AP	85.50 / 3.366	0.140									11.6		8550XX	292		
K594M86AP	86.00 / 3.386	0.160									12.7		8600XX	297		

\*\*\*84.00mm and larger require sleeved engine block

Optional K1 Rod for B18A1/B1, B20B Series: Part # 015BR16137

## HONDA / ACURA

## ACURA / HONDA B-Series

Honda B18 LS VTEC (B18A1/B1 With B16A VTEC Head)															
Kit Part #	Bore mm / Inch	Oversize	Stroke	Rod	Comp. Ht.	Head cc's	Volume	Gasket Thickness	Deck Clearance	Block Ht.	Comp. Ratio	Pin Part # (Included)	Ringset (Included)	Avg. Wt.	Foot- note
K541M81AP	81.00 / 3.189	Std.	3.504 89mm	5.394 137mm	1.181 30mm	42.7	-12cc	0.030 .76mm	.020 .50mm	8.347 212mm	8.4	S656 21mm - .827 x 2.002	8100XX	280	1, 3
K541M8125AP	81.25 / 3.199	0.010									8125XX		281		
K541M815AP	81.50 / 3.209	0.020									8150XX		285		
K541M82AP	82.00 / 3.228	0.040									8200XX		296		
<i>Includes .225" wall tool steel pin</i>															
K673M81AP	81.00 / 3.189	Std.	3.504 89mm	5.394 137mm	1.181 30mm	42.7	-8cc	0.030 .76mm	.020 .50mm	8.347 212mm	9.0	S733 21mm - .827 x 2.002	8100XX	289	1, 2, 3
K673M815AP	81.50 / 3.209	0.020									8150XX		295		
K673M82AP	82.00 / 3.228	0.040									8200XX		303		
<i>Includes .200" wall tool steel pin</i>															
K649M84	84.00 / 3.307	0.080	3.504 89mm	5.394 137mm	1.181 30mm	42.7	-10cc	0.030 .76mm	.020 .50mm	8.347 212mm	9.3	S750 21mm - .827 x 2.362	8400XX	320	1, 3
K649M845	84.50 / 3.327	0.100									8450XX		326		
K649M85	85.00 / 3.346	0.120									8500XX		332		
K542M81AP	81.00 / 3.189	Std.	3.504 89mm	5.394 137mm	1.175 29.85mm	42.7	-2.4cc FT	0.030 .76mm	.026 .66mm	8.347 212mm	9.8	S656 21mm - .827 x 2.002	8100XX	280	1, 3
K542M8125AP	81.25 / 3.199	0.010									8125XX		281		
K542M815AP	81.50 / 3.209	0.020									8150XX		285		
K542M82AP	82.00 / 3.228	0.040									8200XX		296		
K623M84	84.00 / 3.307	0.080	3.504 89mm	5.394 137mm	1.181 30mm	42.7	-2.3cc FT	0.030 .76mm	.020 .50mm	8.347 212mm	10.5	S656 21mm - .827 x 2.002	8400XX	296	1, 3
K623M845	84.50 / 3.327	0.100									8450XX		302		
K566M81AP	81.00 / 3.189	Std.	3.504 89mm	5.394 137mm	1.185 30.1mm	42.7	5cc	0.030 .76mm	.016 .40mm	8.347 212mm	11.5	S656 21mm - .827 x 2.002	8100XX	275	1, 2, 3
K566M8125AP	81.25 / 3.199	0.010									8125XX		279		
K566M815AP	81.50 / 3.209	0.020									8150XX		281		
K566M82AP	82.00 / 3.228	0.040									8200XX		287		
K593M81AP	81.00 / 3.189	Std.	3.504 89mm	5.394 137mm	1.181 30mm	42.7	8.3cc	0.030 .76mm	.020 .50mm	8.347 212mm	12.2	S656 21mm - .827 x 2.002	8100XX	270	1, 2, 3
K593M8125AP	81.25 / 3.199	0.010									8125XX		270		
K593M815AP	81.50 / 3.209	0.020									8150XX		278		
K593M82AP	82.00 / 3.228	0.040									8200XX		281		
K594M84AP	84.00 / 3.307	0.080	3.504 89mm	5.394 137mm	1.181 30mm	42.7	8.3cc	0.030 .76mm	.020 .50mm	8.347 212mm	12.9	S561 21mm - .827 x 2.002	8400XX	275	1, 3
K594M8425AP	84.25 / 3.317	0.090									8425XX		276		
K594M845AP	84.50 / 3.327	0.100									8450XX		279		
K594M85AP	85.00 / 3.346	0.120									8500XX		286		
K594M855AP	85.50 / 3.366	0.140									8550XX		292		
K594M86AP	86.00 / 3.386	0.160									8600XX		297		

\*\*\*84.00mm and larger require sleeved engine block  
Optional K1 Rod for B18C Series: Part # 015BS16138

## Foot Notes (far right column)

- |  |   |   |
|--|---|---|
| 1 - Most Wiseco Pistons have offset pins. (Pins must be offset, same as OEM, for quietest operation).  | B - Build to order.                         | P - Piston guided rod, washer required. |
| 2 - Due to compression height that may protrude above the deck, it is recommended that a 1.00mm thick head gasket is used.                           | C - Stroker Kit for B25 stroker Crank.      | Q - Oil Squirter modification required. |
| 3 - Optional pin upgrade available.  | D - Weight reduction possible.              | R - Pin 20mm, OEM = 20.65mm (13/16)     |
| 4 - Utilizes extra deep valve pockets to expand the range of I-Vtec with big cams and milled heads   | E - With valve pockets online K557M Series. |   |
| 6 - These pistons have an oil ring groove that is lower than OE. Will not work with sleeves with access hole if the oil ring is not pinned in place. | G - Only with 2.5L connecting rods          |   |
|  | H - Based on Volvo rod 23mm. Ford OEM 21mm. |   |



## HONDA / ACURA

## ACURA / HONDA B-Series

Honda B18C • Integra 1994-2001																
Kit Part #	Bore mm / Inch	Oversize	Stroke	Rod	Comp. Ht.	Head cc's	Volume	Gasket Thickness	Deck Clearance	Block Ht.	Comp. Ratio	Pin Part # (Included)	Ringset (Included)	Avg. Wt.	Foot- note	
K541M81AP	81.00 / 3.189	Std.	3.433 87.2mm	5.433 138mm	1.181 30mm	41.5	-12cc	0.030 .76mm	.017 .43mm	8.347 212mm	8.5	S656 21mm - .827 x 2.002	8100XX	280	1, 3	
K541M8125AP	81.25 / 3.199	0.010									8125XX		281			
K541M815AP	81.50 / 3.209	0.020									8150XX		285			
K541M82AP	82.00 / 3.228	0.040									8200XX		296			
<i>Includes .225" wall tool steel pin</i>																
K673M81AP	81.00 / 3.189	Std.	3.433 87.2mm	5.433 138mm	1.181 30mm	41.5	-8cc	0.030 .76mm	.017 .43mm	8.347 212mm	9.1	S733 21mm - .827 x 2.002	8100XX	289	1, 2, 3	
K673M815AP	81.50 / 3.209	0.020									8150XX		295			
K673M82AP	82.00 / 3.228	0.040									8200XX		303			
<i>Includes .200" wall tool steel pin</i>																
K649M84	84.00 / 3.307	0.080	3.433 87.2mm	5.433 138mm	1.181 30mm	41.5	-10cc	0.030 .76mm	.017 .43mm	8.347 212mm	9.3	S750 21mm - .827 x 2.362	8400XX	320	1, 3	
K649M845	84.50 / 3.327	0.100									8450XX		326			
K649M85	85.00 / 3.346	0.120									8500XX		332			
K542M81AP	81.00 / 3.189	Std.	3.433 87.2mm	5.433 138mm	1.175 29.85mm	41.5	-2.4cc FT	0.030 .76mm	.022 .56mm	8.347 212mm	9.9	S656 21mm - .827 x 2.002	8100XX	280	1, 3	
K542M8125AP	81.25 / 3.199	0.010									8125XX		281			
K542M815AP	81.50 / 3.209	0.020									8150XX		285			
K542M82AP	82.00 / 3.228	0.040									8200XX		296			
K623M84	84.00 / 3.307	0.080	3.433 87.2mm	5.433 138mm	1.181 30mm	41.5	-2.3cc FT	0.030 .76mm	.017 .43mm	8.347 212mm	10.6	S656 21mm - .827 x 2.002	8400XX	296	1, 3	
K623M845	84.50 / 3.327	0.100									8450XX		302			
K566M81AP	81.00 / 3.189	Std.	3.433 87.2mm	5.433 138mm	1.185 30.1mm	41.5	5cc	0.030 .76mm	.013 .33mm	8.347 212mm	11.7	S656 21mm - .827 x 2.002	8100XX	275	1, 2, 3	
K566M8125AP	81.25 / 3.199	0.010									8125XX		279			
K566M815AP	81.50 / 3.209	0.020									8150XX		281			
K566M82AP	82.00 / 3.228	0.040									8200XX		287			
K593M81AP	81.00 / 3.189	Std.	3.433 87.2mm	5.433 138mm	1.181 30mm	41.5	8.3cc	0.030 .76mm	.017 .43mm	8.347 212mm	13.4	S656 21mm - .827 x 2.002	8100XX	270	1, 2, 3	
K593M8125AP	81.25 / 3.199	0.010									8125XX		270			
K593M815AP	81.50 / 3.209	0.020									8150XX		278			
K593M82AP	82.00 / 3.228	0.040									8200XX		281			
K594M84AP	84.00 / 3.307	0.080	3.433 87.2mm	5.433 138mm	1.181 30mm	41.5	8.3cc	0.030 .76mm	.017 .43mm	8.347 212mm	13.1	S561 21mm - .827 x 2.002	8400XX	275	1, 3	
K594M8425AP	84.25 / 3.317	0.090									8425XX		276			
K594M845AP	84.50 / 3.327	0.100									8450XX		279			
K594M85AP	85.00 / 3.346	0.120									8500XX		286			
K594M855AP	85.50 / 3.366	0.140									8550XX		292			
K594M86AP	86.00 / 3.386	0.160									8600XX		297			

\*\*\*84.00mm and larger require sleeved engine block  
Optional K1 Rod for B18C Series: Part # 015BS161388

Honda B20B With VTEC Head • CRV / VTEC 1997-2002																
Kit Part #	Bore mm / Inch	Oversize	Stroke	Rod	Comp. Ht.	Head cc's	Volume	Gasket Thickness	Deck Clearance	Block Ht.	Comp. Ratio	Pin Part # (Included)	Ringset (Included)	Avg. Wt.	Foot- note	
K545M84	84.00 / 3.307	Std.	3.504 89mm	5.394 137mm	1.181 30mm	42.7	-8cc	0.030 .76mm	.020 .50mm	8.347 212mm	8.3	S733 21mm - .827 x 2.002	8100XX	294	1, 2, 3	
K545M845	84.50 / 3.327	0.020									8150XX		297			
K545M85	85.00 / 3.346	0.040									8200XX		303			
<i>Includes .200" wall tool steel pin</i>																
K649M84	84.00 / 3.307	Std.	3.504 89mm	5.394 137mm	1.181 30mm	42.7	-10cc	0.030 .76mm	.020 .50mm	8.347 212mm	9.3	S750 21mm - .827 x 2.362	8400XX	320	1, 3	
K649M845	84.50 / 3.327	0.020									8450XX		326			
K649M85	85.00 / 3.346	0.040									8500XX		332			
K623M84	84.00 / 3.307	Std.	3.504 89mm	5.394 137mm	1.181 30mm	42.7	-2.3cc FT	0.030 .76mm	.020 .50mm	8.347 212mm	10.5	S656 21mm - .827 x 2.002	8400XX	296	1, 3	
K623M845	84.50 / 3.327	0.020									8450XX		302			
K567M84AP	84.00 / 3.307	Std.	3.504 89mm	5.394 137mm	1.181 30mm	42.7	2cc	0.040 1.0mm	.020 .50mm	8.347 212mm	11.3	S656 21mm - .827 x 2.002	8400XX	288	1, 3	
K567M8425AP	84.25 / 3.317	0.010									8425XX		292			
K567M845AP	84.50 / 3.327	0.020									8450XX		294			
K567M85AP	85.00 / 3.346	0.040									8500XX		300			
K594M84AP	84.00 / 3.307	Std.	3.504 89mm	5.394 137mm	1.181 30mm	42.7	8.3cc	0.030 .76mm	.020 .50mm	8.347 212mm	12.9	S561 21mm - .827 x 2.002	8400XX	275	1, 3	
K594M8425AP	84.25 / 3.317	0.010									8425XX		276			
K594M845AP	84.50 / 3.327	0.020									8450XX		279			
K594M85AP	85.00 / 3.346	0.040									8500XX		286			
K594M855AP	85.50 / 3.366	0.060									8550XX		292			
K594M86AP	86.00 / 3.386	0.080									8600XX		297			

\*\*\*84.00mm and larger require sleeved engine block  
Optional K1 Rod for B18A1/B1, B20B Series: Part # 015BR16137

## HONDA / ACURA

## ACURA / HONDA D-Series

Honda D16Z6, D16Y7 • Civic SOHC 1992+															
Kit Part #	Bore mm / Inch	Oversize	Stroke	Rod	Comp. Ht.	Head cc's	Volume	Gasket Thickness	Deck Clearance	Block Ht.	Comp. Ratio	Pin Part # (Included)	Ringset (Included)	Avg. Wt.	Foot note
K546M755	75.50 / 2.972	0.020	3.543 90mm	5.394 137mm	1.174 29.81mm	34.6	-15.4cc	0.030 .76mm	.007 .18mm	8.347 212mm	8.4	S622 19mm - .748 x 2.500	7550XX	232	1, 3
Honda D16Y8 • Civic SOHC 1996-2000															
Kit Part #	Bore mm / Inch	Oversize	Stroke	Rod	Comp. Ht.	Head cc's	Volume	Gasket Thickness	Deck Clearance	Block Ht.	Comp. Ratio	Pin Part # (Included)	Ringset (Included)	Avg. Wt.	Foot note
K543M75	75.00 / 2.953	Std.	3.543	5.394 137mm	1.148 29.15mm	32.8	-14cc	0.030 .76mm	.033 .84mm	8.347 212mm	8.4	S622 19mm - .748 x 2.500	7500XX	222	1, 3
K543M755	75.50 / 2.972	0.020	90mm								8.5		7550XX	230	
Honda D17 • Civic 2000-2005															
Kit Part #	Bore mm / Inch	Oversize	Stroke	Rod	Comp. Ht.	Head cc's	Volume	Gasket Thickness	Deck Clearance	Block Ht.	Comp. Ratio	Pin Part # (Included)	Ringset (Included)	Avg. Wt.	Foot note
K624M75	75.00 / 2.953	Std.	3.716 94.4mm	5.394 137mm	1.063 27mm	33.5	-14cc	0.030 .76mm	.032 .81mm	8.347 212mm	8.8	S622 19mm - .748 x 2.500	7500XX	210	1, 3
K624M755	75.50 / 2.972	0.020									8.8		7550XX	217	

\*\*\*84.00mm and larger require sleeved engine block  
Optional K1 Rod for B18C Series: Part # 015BS16138

## ACURA / HONDA F-Series

Honda F20C S2000 (FRM Cylinders must run SLEEVED bores)															
Kit Part #	Bore mm / Inch	Oversize	Stroke	Rod	Comp. Ht.	Head cc's	Volume	Gasket Thickness	Deck Clearance	Block Ht.	Comp. Ratio	Pin Part # (Included)	Ringset (Included)	Avg. Wt.	Foot note
K632M87	87.00 / 3.425	Std.	3.307 84mm	6.023 153mm	1.141 28.98mm	52.5	-10cc	0.030 .76mm	.001 .25mm	8.819 224mm	8.4	S551 23mm - .905 x 2.002	8700XX	302	1, 2
K632M875	87.50 / 3.445	0.020									8.5		8750XX	307	
K632M89	89.00 / 3.504	0.080									8.8		8900XX	326	
KE238M875	87.50 / 3.445	0.020	3.307 84mm	6.023 153mm	1.141 28.98mm	52.5	7cc	0.030 .76mm	.001 .25mm	8.819 224mm	11.1	S551 23mm - .905 x 2.002	8750XX	338	1, 2
KE238M89	89.00 / 3.504	0.080	11.4	8900XX	345										
Honda F22C S2000 (FRM Cylinders must run SLEEVED bores)															
Kit Part #	Bore mm / Inch	Oversize	Stroke	Rod	Comp. Ht.	Head cc's	Volume	Gasket Thickness	Deck Clearance	Block Ht.	Comp. Ratio	Pin Part # (Included)	Ringset (Included)	Avg. Wt.	Foot note
K632M87	87.00 / 3.425	Std.	3.573 90.75mm	5.892 149.65mm	1.141 28.98mm	52.5	-10cc	0.030 .76mm	+.001 +.25mm	8.819 224mm	9.0	S551 23mm - .905 x 2.002	8700XX	302	1, 2
K632M875	87.50 / 3.445	0.020									9.1		8750XX	307	
K632M89	89.00 / 3.504	0.080									9.4		8900XX	326	
KE238M875	87.50 / 3.445	0.020	3.573 90.75mm	5.892 149.65mm	1.141 28.98mm	52.5	7cc	0.030 .76mm	+.001 +.25mm	8.819 224mm	11.9	S551 23mm - .905 x 2.002	8750XX	338	1, 2
KE238M89	89.00 / 3.504	0.080	12.2	8900XX	345										

NOTE: For F20C or F22C - If using OEM connecting rod, pins must be DLC coated, or rod must be bushed.

## Foot Notes (far right column)

- |  |   |   |
|--|---|---|
| 1 - Most Wiseco Pistons have offset pins. (Pins must be offset, same as OEM, for quietest operation).  | B - Build to order.                         | P - Piston guided rod, washer required. |
| 2 - Due to compression height that may protrude above the deck, it is recommended that a 1.00mm thick head gasket is used.                           | C - Stroker Kit for B25 stroker Crank.      | Q - Oil Squirter modification required. |
| 3 - Optional pin upgrade available.  | D - Weight reduction possible.              | R - Pin 20mm, OEM = 20.65mm (13/16)     |
| 4 - Utilizes extra deep valve pockets to expand the range of I-Vtec with big cams and milled heads   | E - With valve pockets online K557M Series. |   |
| 6 - These pistons have an oil ring groove that is lower than OE. Will not work with sleeves with access hole if the oil ring is not pinned in place. | G - Only with 2.5L connecting rods          |   |
|  | H - Based on Volvo rod 23mm. Ford OEM 21mm. |   |



## HONDA / ACURA

## ACURA / HONDA H-Series

Honda H22 • Prelude 1992-2001 (FRM cylinders MUST run SLEEVED bores)															
Kit Part #	Bore mm / Inch	Oversize	Stroke	Rod	Comp. Ht.	Head cc's	Volume	Gasket Thickness	Deck Clearance	Block Ht.	Comp. Ratio	Pin Part # (Included)	Ringset (Included)	Avg. Wt.	Foot note
K544M87	87.00 / 3.425	Std.	3.571 90.7mm	5.636 143.15mm	1.219 31mm	53.8	-14cc	0.030 .76mm	.001 .25mm	8.642 219.5mm	8.4	S625 22mm - .866 x 2.500	8700XX	314	1
K544M88	88.00 / 3.464	0.040									8.6		8800XX	331	
K544M89	89.00 / 3.504	0.080									8.8		8900XX	337	
K572M87	87.00 / 3.425	Std.	3.571 90.7mm	5.636 143.15mm	1.219 31mm	53.8	7cc	0.030 .76mm	.001 .25mm	8.642 219.5mm	11.5	S550 22mm - .866 x 2.002	8700XX	333	1
K572M88	88.00 / 3.464	0.040									11.7		8800XX	346	
K572M89	89.00 / 3.504	0.080									11.9		8900XX	355	

**Honda H23 • Prelude (To be run with .030" piston to head minimum requires .040" gasket minimum)**

Kit Part #	Bore mm / Inch	Oversize	Stroke	Rod	Comp. Ht.	Head cc's	Volume	Gasket Thickness	Deck Clearance	Block Ht.	Comp. Ratio	Pin Part # (Included)	Ringset (Included)	Avg. Wt.	Foot note
K544M87	87.00 / 3.425	Std.	3.740 95mm	5.571 141.5mm	1.219 31mm	50.0	-14cc	0.030 .76mm	.001 .25mm	8.661 220mm	9.2	S625 22mm - .866 x 2.500	8700XX	314	1, 3
K544M88	88.00 / 3.464	0.040									9.4		8800XX	331	
K544M89	89.00 / 3.504	0.080									9.6		8900XX	337	
K572M87	87.00 / 3.425	Std.	3.740 95mm	5.571 141.5mm	1.219 31mm	50.0	7cc	0.030 .76mm	.001 .25mm	8.661 220mm	12.9	S550 22mm - .866 x 2.002	8700XX	333	1, 3
K572M88	88.00 / 3.464	0.040									13.1		8800XX	346	
K572M89	89.00 / 3.504	0.080									13.3		8900XX	355	

Optional K1 Rod for H22 Series: Part # 015BV17143

## ACURA / HONDA K-Series

Honda K20A/Z • RSX Type-S 2002-2006 • Honda Civic Si 2006-2011															
Kit Part #	Bore mm / Inch	Oversize	Stroke	Rod	Comp. Ht.	Head cc's	Volume	Gasket Thickness	Deck Clearance	Block Ht.	Comp. Ratio	Pin Part # (Included)	Ringset (Included)	Avg. Wt.	Foot note
K568M86	86.00 / 3.386	Std.	3.386 86mm	5.472 139mm	1.181 30mm	50.5	-9cc	0.025 .63mm	.001 .025mm	8.347 212mm	8.8	S550 22mm - .866 x 2.002	8600XX	290	1, 3
K568M865	86.50 / 3.405	0.020									8.9		8650XX	298	
K568M87	87.00 / 3.425	0.040									9.0		8700XX	303	
K568M875	87.50 / 3.445	0.060									9.0		8750XX	307	
K568M88	88.00 / 3.464	0.080									9.1		8800XX	312	
K568M89	89.00 / 3.504	0.120									9.3		8900XX	322	
K631M86	86.00 / 3.386	Std.	3.386 86mm	5.472 139mm	1.181 30mm	50.5	-3.4cc FT	0.025 .63mm	.001 .025mm	8.347 212mm	9.6	S618 22mm - .866 x 2.000	8600XX	302	1, 3
K631M865	86.50 / 3.405	0.020									9.6		8650XX	316	
K631M87	87.00 / 3.425	0.040									9.7		8700XX	336	
K631M875	87.50 / 3.445	0.060									9.8		8750XX	346	
K634M865	86.50 / 3.405	0.020	3.386 86mm	5.472 139mm	1.181 30mm	50.5	5cc	0.025 .63mm	.001 .025mm	8.347 212mm	11.1	S618 22mm - .866 x 2.000	8650XX	315	1, 3
K634M87	87.00 / 3.425	0.040									11.1		8700XX	316	
K634M8725	87.25 / 3.435	0.050									11.2		8725XX	320	
K634M875	87.50 / 3.445	0.060									11.3		8750XX	318	
K634M88	88.00 / 3.465	0.080									11.4		8800XX	327	
K634M89	89.00 / 3.504	0.120									11.6		8900XX	320	
<b>Includes .225" wall tool steel pin</b>															
K573M86AP	86.00 / 3.386	Std.	3.386 86mm	5.472 139mm	1.181 30mm	50.5	8cc	0.025 .63mm	.001 .025mm	8.347 212mm	11.6	S734 22mm - .866 x 2.002	8600XX	320	1
K573M865AP	86.50 / 3.405	0.020									11.7		8650XX	330	
K573M87AP	87.00 / 3.425	0.040									11.8		8700XX	330	
K573M875AP	87.50 / 3.445	0.060									12.0		8750XX	342	
K573M88AP	88.00 / 3.464	0.080									12.1		8800XX	348	
K573M89AP	89.00 / 3.504	0.120									12.3		8900XX	360	
K650M86AP	86.00 / 3.386	Std.	3.386 86mm	5.472 139mm	1.181 30mm	50.5	10.5cc	0.025 .63mm	.001 .025mm	8.347 212mm	12.2	S550 22mm - .866 x 2.002	8600XX	321	1, 3, 4
K650M865AP	86.50 / 3.405	0.020									12.3		8650XX	326	
K650M87AP	87.00 / 3.425	0.040									12.4		8700XX	331	
K650M875AP	87.50 / 3.445	0.060									12.6		8750XX	336	
K650M88AP	88.00 / 3.464	0.080									12.7		8800XX	343	
K650M89AP	89.00 / 3.504	0.120									12.9		8900XX	355	

Optional K1 Rod for K20 Light weight (naturally aspirated) Series: Part # 015BW17139L

Optional K1 Rod for K20 Turbo Series: Part # 015BW17139



## HONDA / ACURA

## ACURA / HONDA H-Series (CONTINUED)

Honda K24 & K24 w/ K20A/Z Cylinder Head) 2002-2011															
Kit Part #	Bore mm / Inch	Oversize	Stroke	Rod	Comp. Ht.	Head cc's	Volume	Gasket Thickness	Deck Clearance	Block Ht.	Comp. Ratio	Pin Part # (Included)	Ringset (Included)	Avg. Wt.	Foot note
K622M87	87.00 / 3.425	Std.	3.897 99mm	5.984 152mm	1.181 30mm	50.5	-21cc	0.025 .63mm	0	9.114 231.5mm	8.7	S618 22mm - .866 x 2.000	8700XX	313	1, 3
K622M875	87.50 / 3.445	0.020									8.8		8750XX	320	
K622M88	88.00 / 3.464	0.040									8.9		8800XX	326	
K568M87	87.00 / 3.425	Std.	3.897 99mm	5.984 152mm	1.181 30mm	50.5	-9cc	0.025 .63mm	0	9.114 231.5mm	10.2	S550 22mm - .866 x 2.002	8700XX	303	1, 3
K568M875	87.50 / 3.445	0.020									10.3		8750XX	307	
K568M88	88.00 / 3.464	0.040									10.4		8800XX	312	
K568M89	89.00 / 3.504	0.080									10.6		8900XX	322	
K631M87	87.00 / 3.425	Std.									3.897 99mm		5.984 152mm	1.181 30mm	
K631M875	87.50 / 3.445	0.020	11.2	8750XX	335										
K634M87	87.00 / 3.425	Std.	3.897 99mm	5.984 152mm	1.181 30mm	50.5	5cc	0.025 .63mm	0	9.114 231.5mm		12.8			S618 22mm - .866 x 2.000
K634M875	87.25 / 3.435	0.010									12.8	8725XX	320		
K634M875	87.50 / 3.445	0.020									12.9	8750XX	318		
K634M88	88.00 / 3.464	0.040									13.0	8800XX	327		
K634M89	89.00 / 3.504	0.080									13.3	8900XX	320		
K634M895	89.50 / 3.524	0.100									13.4	8950XX	342		
<i>Includes .225" wall tool steel pin</i>															
K573M87AP	87.00 / 3.425	Std.	3.897 99mm	5.984 152mm	1.181 30mm	50.5	8cc	0.025 .63mm	0	9.114 231.5mm	13.5	S734 22mm - .866 x 2.002	8700XX	330	1
K573M875AP	87.50 / 3.445	0.020									13.7		8750XX	342	
K573M88AP	88.00 / 3.464	0.040									13.8		8800XX	348	
K573M89AP	89.00 / 3.504	0.080									14.0		8900XX	360	
K650M87AP	87.00 / 3.425	Std.	3.897 99mm	5.984 152mm	1.181 30mm	50.5	10.5cc	0.025 .63mm	0	9.114 231.5mm	14.2	S550 22mm - .866 x 2.002	8700XX	331	1, 3, 4
K650M875AP	87.50 / 3.445	0.020									14.4		8750XX	336	
K650M88AP	88.00 / 3.464	0.040									14.5		8800XX	343	
K650M89AP	89.00 / 3.504	0.080									14.8		8900XX	355	

Optional K1 Rod for K24 Turbo Series: Part # 015BX17152

## ACURA / HONDA L-Series

Honda L15A VTEC • Fit/Jazz/City 1.5L															
Kit Part #	Bore mm / Inch	Oversize	Stroke	Rod	Comp. Ht.	Head cc's	Volume	Gasket Thickness	Deck Clearance	Block Ht.	Comp. Ratio	Pin Part # (Included)	Ringset (Included)	Avg. Wt.	Foot note
K637M73	73.00 / 2.874	Std.	3.520 89.4mm	5.866 149mm	1.030 26.16mm	26.0	-11.5cc	0.030 .76mm	.005 .13mm	8.661 220mm	10.0	S524 18mm - .708 x 2.244	2874XC	203	

Optional K1 Rod for Fit Series: Part # 015BY10149

## ACURA / HONDA R-Series

Honda R18A • Civic 1.8L SOHC 16V i-VTEC															
Kit Part #	Bore mm / Inch	Oversize	Stroke	Rod	Comp. Ht.	Head cc's	Volume	Gasket Thickness	Deck Clearance	Block Ht.	Comp. Ratio	Pin Part # (Included)	Ringset (Included)	Avg. Wt.	Foot note
K672M81AP	81.00 / 3.189	Std.	3.437 87.3mm	6.200 157.5mm	1.132 28.5mm	40.5	-10cc	0.040 1.0mm	.006 .14mm	9.055 230mm	8.9	S623 20mm - .787 x 2.500	8100XX	278	1, 3
K672M815AP	81.25 / 3.199	0.010									9.0		8125XX	285	
K672M82AP	81.50 / 3.209	0.020									9.0		8150XX	287	

Optional K1 Rod for R18A Series: Part # 015BZ14158

## Foot Notes (far right column)

- Most Wiseco Pistons have offset pins. (Pins must be offset, same as OEM, for quietest operation).
  - Due to compression height that may protrude above the deck, it is recommended that a 1.00mm thick head gasket is used.
  - Optional pin upgrade available.
  - Utilizes extra deep valve pockets to expand the range of I-Vtec with big cams and milled heads
  - These pistons have an oil ring groove that is lower than OE. Will not work with sleeves with access hole if the oil ring is not pinned in place.
- B - Build to order.  
C - Stroker Kit for B25 stroker Crank.  
D - Weight reduction possible.  
E - With valve pockets online K557M Series.  
G - Only with 2.5L connecting rods  
H - Based on Volvo rod 23mm. Ford OEM 21mm.
- P - Piston guided rod, washer required.  
Q - Oil Squirter modification required.  
R - Pin 20mm, OEM = 20.65mm (13/16)



## HONDA / ACURA / ALFA ROMEO / BMW

## ALFA ROMEO Series

Alfa AR3055 - 33 • 1.7L 4V • Standard Compression															
Kit Part #	Bore mm / Inch	Oversize	Stroke	Rod	Comp. Ht.	Head cc's	Volume	Gasket Thickness	Deck Clearance	Block Ht.	Comp. Ratio	Pin Part # (Included)	Ringset (Included)	Avg. Wt.	Foot- note
KE231M87	87.00 / 3.425	Std.	2.843 72.2mm	5.119 130mm	1.378 35mm	36.5	FT	0.054 1.37mm	.024 .60mm	7.941 201.7mm	10.0	S624 21mm - .827 x 2.500	8700XX	387	1
KE231M875	87.50 / 3.445	0.020									10.0		8750XX	392	
KE231M88	88.00 / 3.465	0.040									10.0		8800XX	398	
Alfa 105 "Nord" 2.0L 8V • High Compression															
Kit Part #	Bore mm / Inch	Oversize	Stroke	Rod	Comp. Ht.	Head cc's	Volume	Gasket Thickness	Deck Clearance	Block Ht.	Comp. Ratio	Pin Part # (Included)	Ringset (Included)	Avg. Wt.	Foot- note
KE234M845	84.00 / 3.307	0.020	3.484	6.181	1.309	76.9	42.4cc	0.069	.048	9.280	10.5	S566 21mm - .866 x 2.500	8400XX	409	1, D
KE234M845	84.50 / 3.327	0.040	88.5mm	157mm	33.25mm			1.74mm	1.2mm	235.7mm		7700XX	8450XX	414	

## BMW / MINI Series

BMW Mini Cooper S 2002-2006 Tritec 1.6L 16V Supercharged															
Kit Part #	Bore mm / Inch	Oversize	Stroke	Rod	Comp. Ht.	Head cc's	Volume	Gasket Thickness	Deck Clearance	Block Ht.	Comp. Ratio	Pin Part # (Included)	Ringset (Included)	Avg. Wt.	Foot- note
K618M77	77.00 / 3.031	Std.	3.778	5.177	1.043	33.0	FT	0.030	.158	8.267	8.5	S624 21mm - .827 x 2.500	7700XX	246	1, D
K618M775	77.50 / 3.051	0.020	85.8mm	131.5mm	26.5mm			.076mm	4.0mm	210mm	8.5	7750XX	250		

## BMW

BMW S14B23 • 2.3L 16V • Turbo															
Kit Part #	Bore mm / Inch	Oversize	Stroke	Rod	Comp. Ht.	Head cc's	Volume	Gasket Thickness	Deck Clearance	Block Ht.	Comp. Ratio	Pin Part # (Included)	Ringset (Included)	Avg. Wt.	Foot- note
KE113M94	94.00 / 3.701	0.024	3.307	5.669	1.260	42.0	-21cc	0.072	.020	217.5	8.0	S722 22mm - .866 x 2.362	9400XX	396	1
KE113M945	94.50 / 3.720	0.043	84mm	144mm	32mm			1.82mm	0.50mm			9450XX	381		
<b>High Compression (OEM CR is 10.5:1)</b>															
KE112M94	94.00 / 3.701	0.024	3.307	5.669	1.260	42.0	-4cc	0.072	.020	217.5	12.0	S566 22mm - .866 x 2.500	9400XX	391	1
KE112M945	94.50 / 3.720	0.043	84mm	144mm	32mm		FT	1.82mm	0.50mm			9450XX	398		
<b>87mm B25 Stroker Turbo</b>															
KE110M94	94.00 / 3.701	0.024	3.425	5.669	1.190	42.0	-38cc	0.072	.020	217.5	8.0	S722 22mm - .866 x 2.362	9400XX	352	1, C
KE110M945	94.50 / 3.720	0.043	87mm	144mm	30.22mm			1.82mm	0.50mm			9450XX	358		
<b>87mm B25 Stroker High Compression</b>															
KE111M94	94.00 / 3.701	0.024	3.425	5.669	1.190	42.0	-5cc	0.072	.020	217.5	12.0	S722 22mm - .866 x 2.362	9400XX	334	1, C
KE111M945	94.50 / 3.720	0.043	87mm	144mm	30.22mm			1.82mm	0.50mm			9450XX	339		
BMW M50B25 • 2.5L 24V • Turbo															
Kit Part #	Bore mm / Inch	Oversize	Stroke	Rod	Comp. Ht.	Head cc's	Volume	Gasket Thickness	Deck Clearance	Block Ht.	Comp. Ratio	Pin Part # (Included)	Ringset (Included)	Avg. Wt.	Foot- note
KE115M84	84.00 / 3.307	Std.	2.953 75mm	5.315 135mm	1.504 38.2mm	34.0	-13.5cc	0.069 1.75mm	+.020 +.50mm	8.268 210mm	8.8	S722 22mm - .866 x 2.362	8400XX	345	1
KE115M845	84.50 / 3.327	0.020											8450XX	353	
KE115M85	85.00 / 3.346	0.040											8500XX	362	
<b>High Compression (OEM CR is 10.0:1)</b>															
KE114M84	84.00 / 3.307	Std.	2.953 75mm	5.315 135mm	1.504 38.2mm	34.0	-1.5cc	0.069 1.75mm	+.020 +.50mm	8.268 210mm	11.0	S655 22mm - .866 x 2.250	8400XX	332	1
KE114M845	84.50 / 3.327	0.020											8450XX	338	
KE114M85	85.00 / 3.346	0.040											8500XX	344	

Optional K1 Rod for M50B25 Series: Part # 005AX17135

BMW M52B25 • Single Vanos 2.5L 24V • Turbo															
Kit Part #	Bore mm / Inch	Oversize	Stroke	Rod	Comp. Ht.	Head cc's	Volume	Gasket Thickness	Deck Clearance	Block Ht.	Comp. Ratio	Pin Part # (Included)	Ringset (Included)	Avg. Wt.	Foot- note
KE118M84	84.00 / 3.307	Std.	2.953 75mm	5.512 140mm	1.287 32.7mm	36.0	-5cc	0.069 1.75mm	.023 .58mm	8.299 210.8mm	8.8	S625 22mm - .866 x 2.500	8400XX	287	1
KE118M845	84.50 / 3.327	0.020											8450XX	293	
KE118M85	85.00 / 3.346	0.040											8500XX	301	